

ROWAN

UPSCALE TUMBLING BLOCKS THROW

By Kaffe Fassett
ZM60KF-00002

v.1

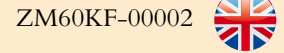


© Copyright MEZ Crafts UK Ltd., 2016.



UPSCALE TUMBLING BLOCKS THROW

by Kaffe Fassett



v.1

[Click the image for a full screen, printable version](#)

YARN

Pure Wool Superwash Worsted

A	Navy 149	8 x 100gm
B	Mallard 144	1 x 100gm
C	Periwinkle 146	1 x 100gm
D	Black 109	3 x 100gm
E	Plum 122	1 x 100gm
F	Cardinal 136	1 x 100gm
G	Rust 106	1 x 100gm
H	Gold 133	1 x 100gm
I	Rich Red 124	2 x 100gm
J	Olive 125	1 x 100gm
K	Oxford 148	1 x 100gm
L	Magenta 119	1 x 100gm
M	Jade 127	1 x 100gm
N	Hawthorn 141	1 x 100gm

**More Yarn
Information**

on knitrowan.com

NEEDLES

3¾mm (US 5) circular needle 100cm long
4mm (no 8) (US 6) circular needle 100cm long
4½mm (no 7) (US 7) circular needle 100cm long

TENSION

20 sts and 25 rows to 10 cm measured over patterned stocking stitch using 4½mm (US 7) needles.

FINISHED SIZE

Completed throw is 156cm (62½ in) wide and approx 170cm (67 in) long.

THROW

Using 4½mm (US 7) circular needle and yarn A cast on 280 sts. Joining in and breaking off colours as required and using the **intarsia** technique as described on the information page, now work in patt from chart, which is worked entirely in st st beg with a K row until chart row 384 has been completed, ending with RS facing for next row.
Cast off.

MAKING UP

Press as described on the information page.

End borders (both alike)

Using 4mm (US 6) circular needle and yarn A, pick up and knit 280 sts along one end of throw.

Beg with a **P** row work 20 rows in st st, inc 1 st at each end of 2nd and every foll alt row, and ending with **WS** facing for next row. 300 sts.

Knit 1 row to form fold line.

Change to 3¾mm (US 5) circular needle and beg with a K row cont in st st, dec 1 st at each end of next and every foll alt row until 280 sts rem.

Work 4 rows, ending with RS facing for next row.

Cast off.

Side borders (both alike)

Using 4mm (US 6) circular needle and yarn A, pick up and knit 320 sts along entire row-end edge of throw between st st end borders.

Beg with a **P** row work 20 rows in st st, inc 1 st at each end of 2nd and every foll alt row, and ending with **WS** facing for next row. 340 sts.

Knit 1 row to form fold line.

Change to 3¾mm (US 5) circular needle and beg with a K row cont in st st, dec 1 st at each end of next and every foll alt row until 320 sts rem.

Work 4 rows, ending with RS facing for next row.

Cast off.

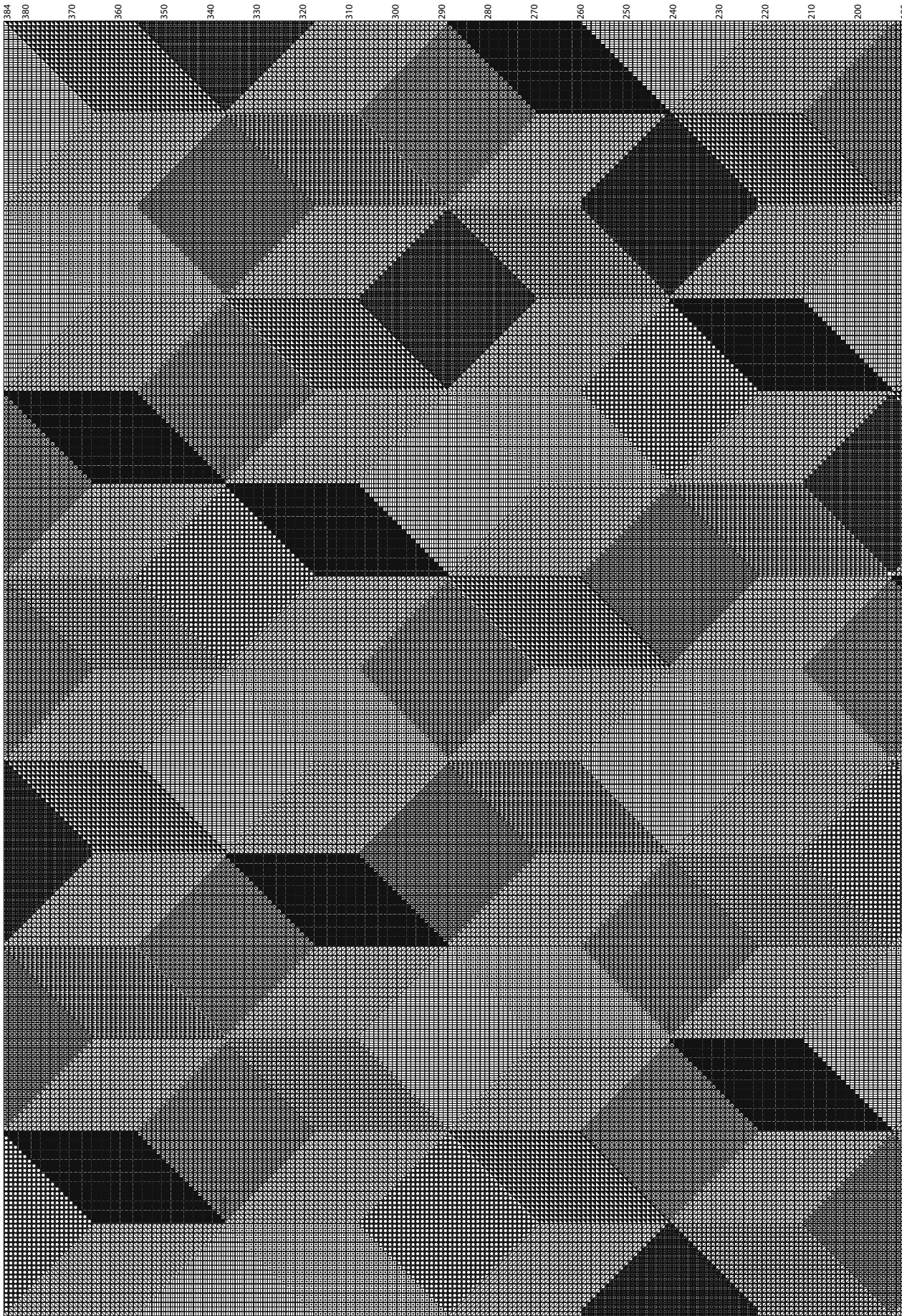
With RS tog join border mitre seams using back stitch, or mattress stitch if preferred.

Fold borders along fold lines and neatly slip stitch in position on reverse.

See information page for finishing instructions.

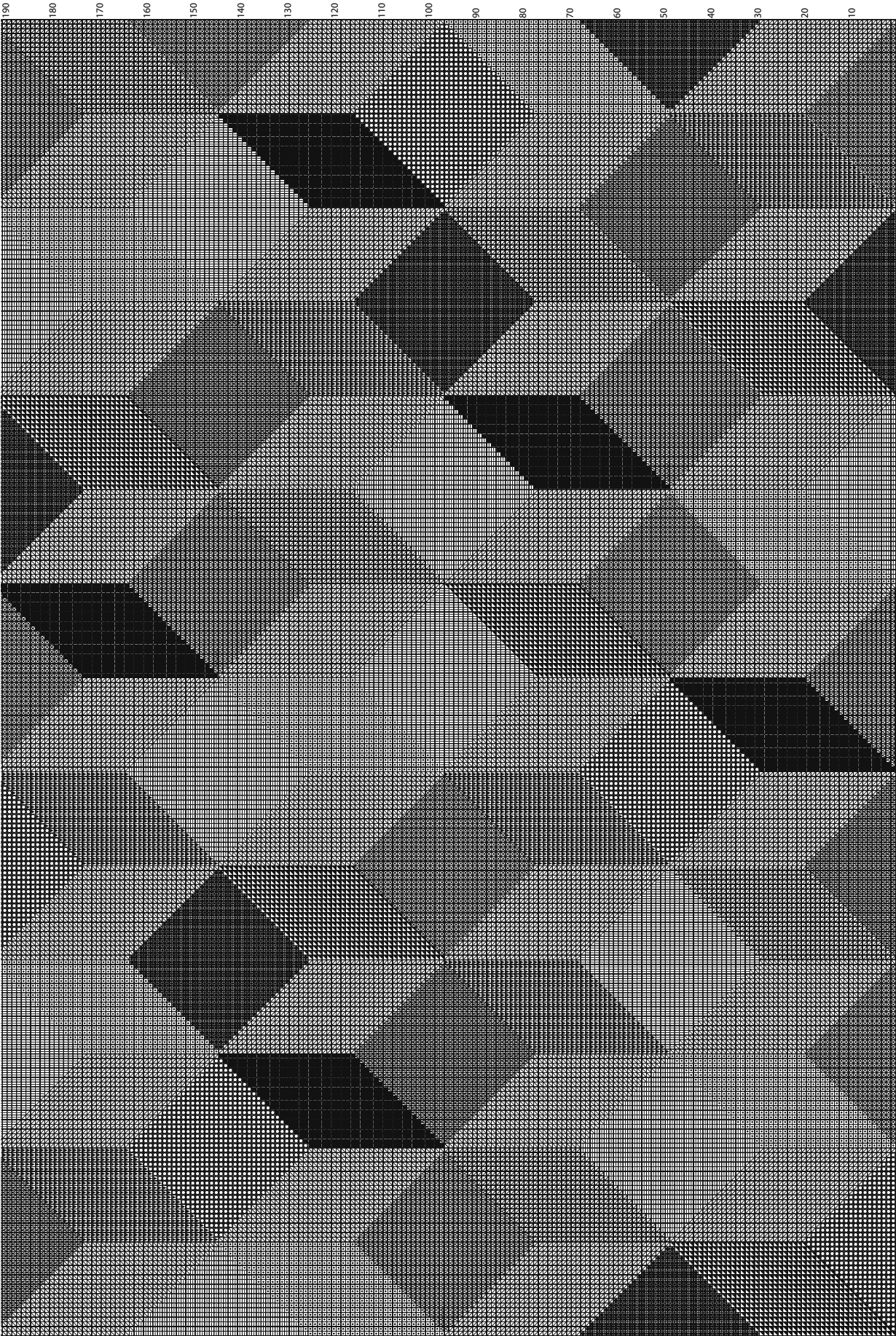
**Information
Pages**

Click the image for a full screen, printable version



Key

A	B	C	D	E	F	G	H	I	J	K	L	M	N



Key

A

B

C

D

E

F

G

H

I

J

K

L

M

N